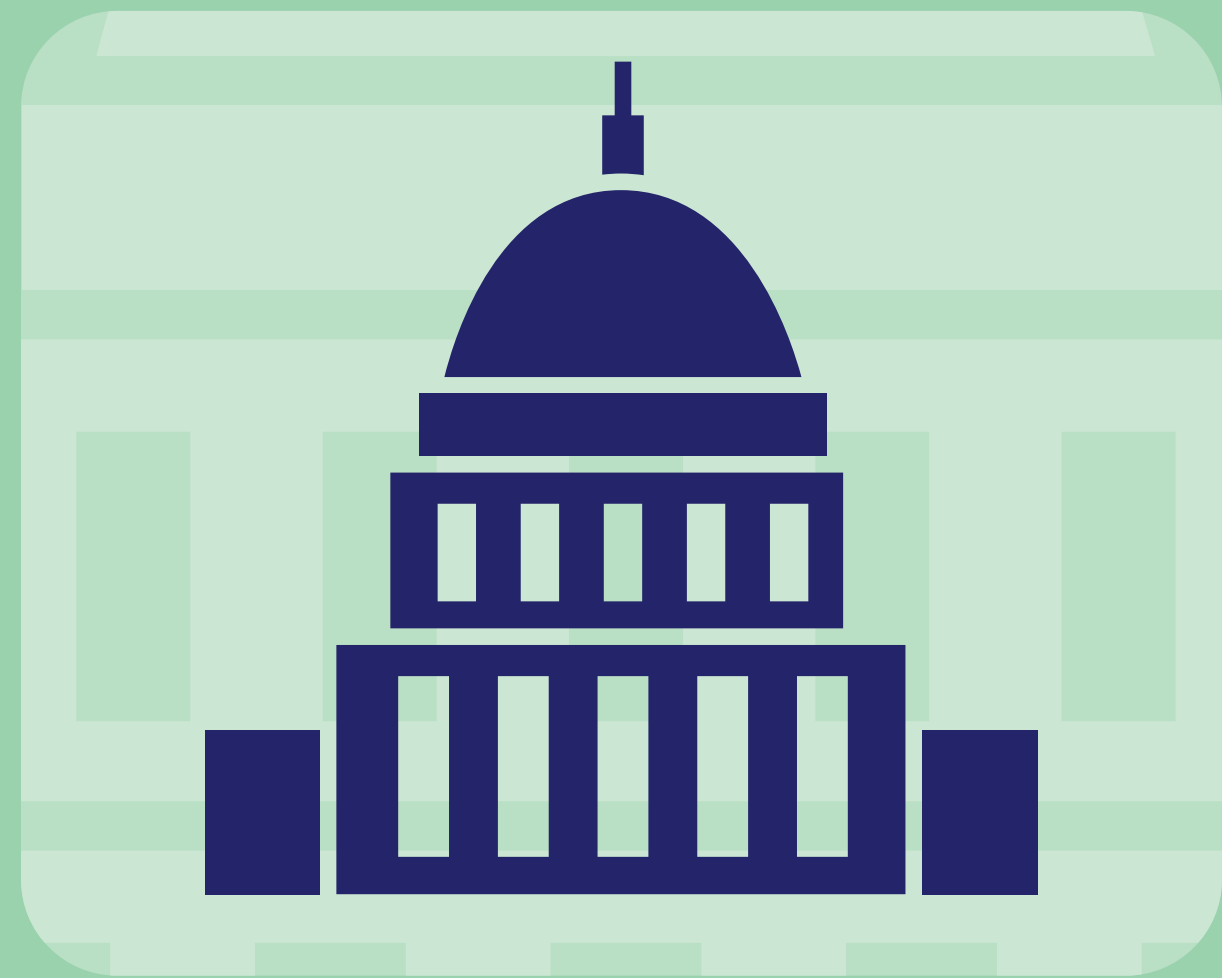


Commitment to the Environment

Central Electric Power Cooperative, Inc. (Central) believes in balancing the need to provide safe and reliable energy with the protection of the environment. The environment will always be a fundamental factor in our planning, construction and operation programs to support our 20-member cooperative and customers.



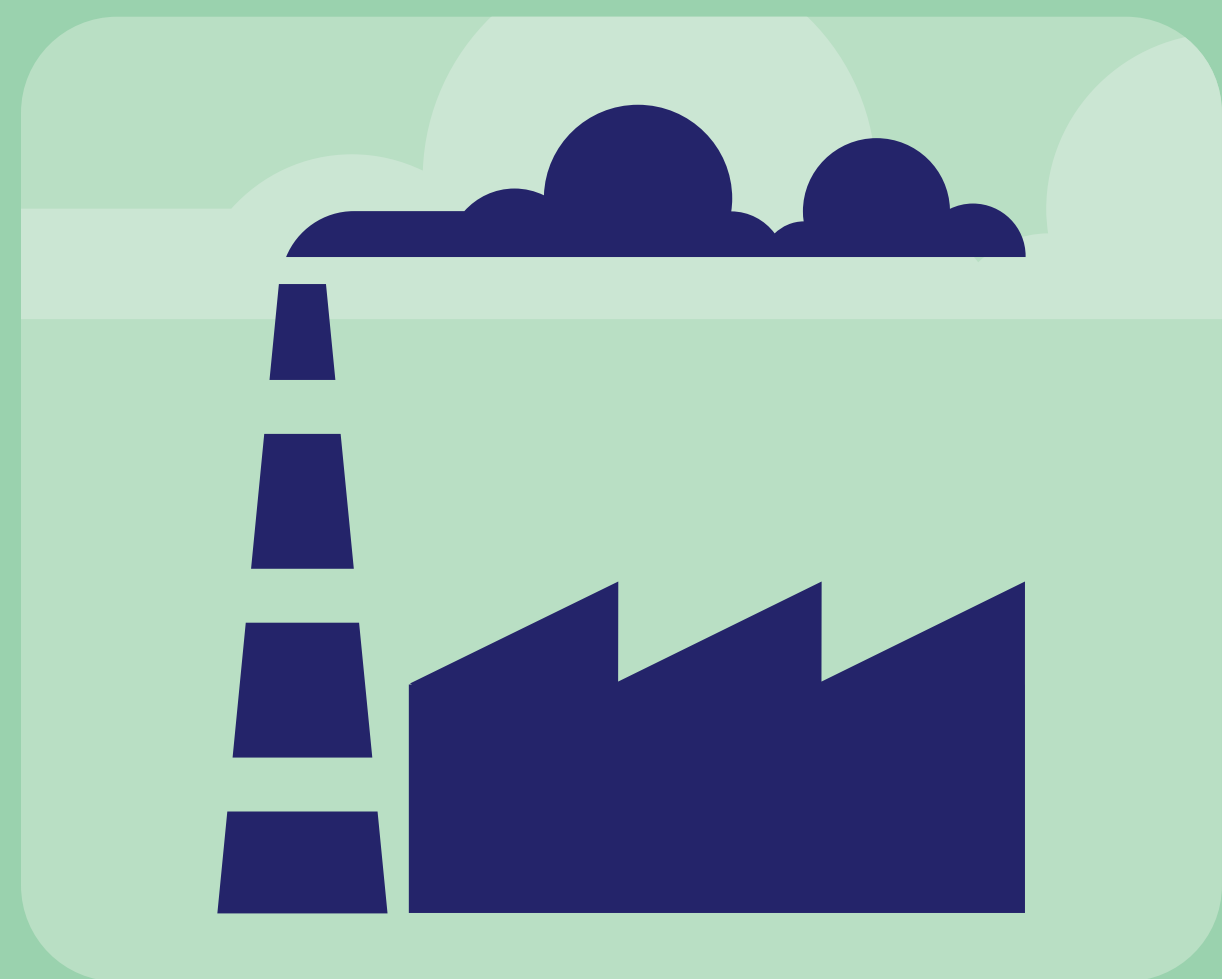
Regulation

Adhere to all local, state and federal environmental laws and regulations.



Operations

Proactively develop tangible goals and performance measures that underscore our commitment to the preservation of finite environmental resources.



Mitigation

Manage waste and advocate for pollution prevention measures; seek to mitigate our impact on the environment and respond swiftly when an environmental emergency arises.



Openness

Value transparency regarding any environmental issues and actively support community efforts for the public's education of environmental protection and conservation.



Organizational Commitment

Ensure that employees, contractors and partners support our organization in its commitment to our environmental practices.